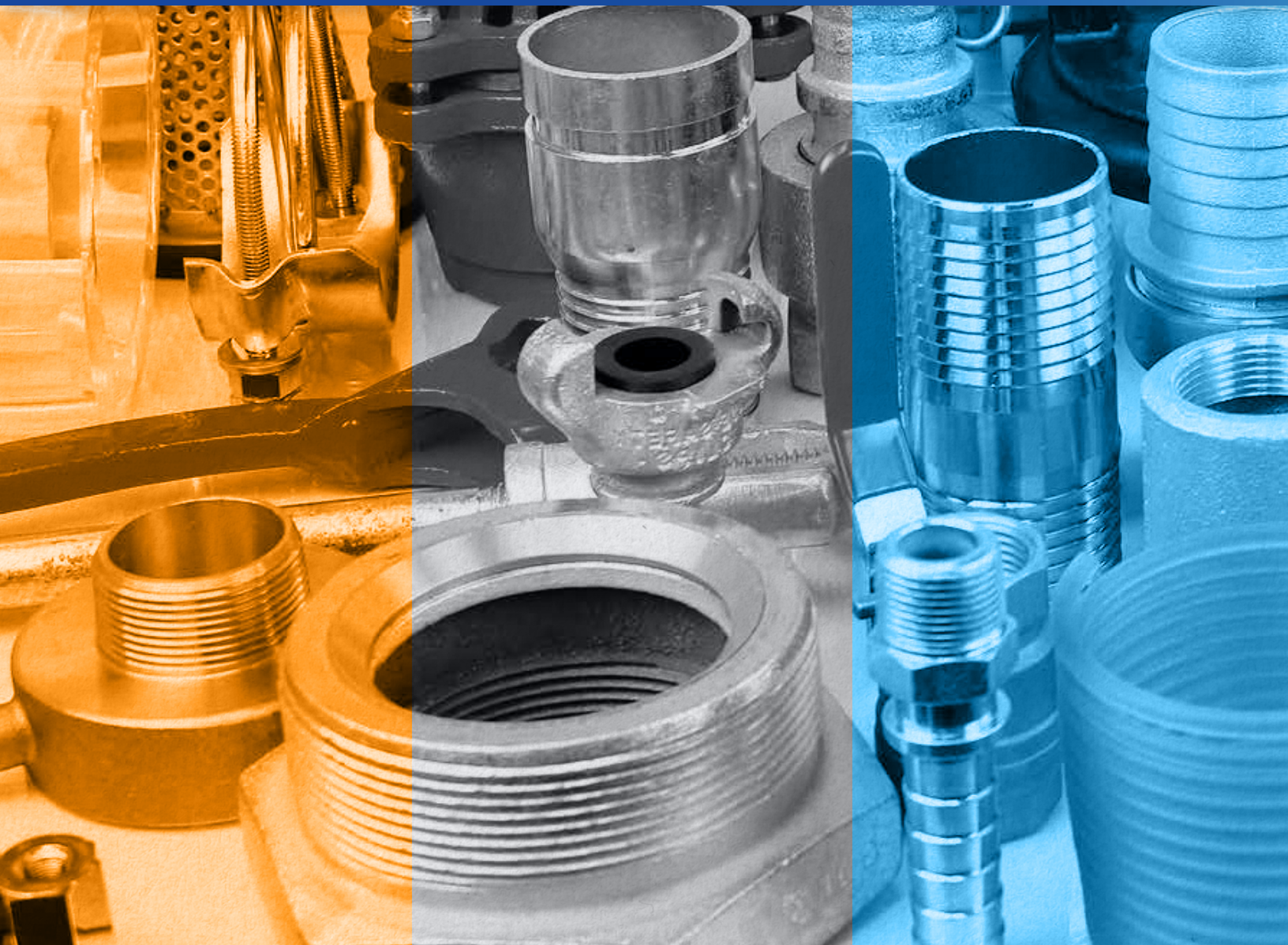




HOSE ACCESSORIES



SUCTION HOSE STRAINERS

Used on the submersed end of suction hose to prevent debris from entering the pump during operation. All threads are NPS. "Trash strainers" are square hole. For the best strainer for your application, call your local RAGCO location.

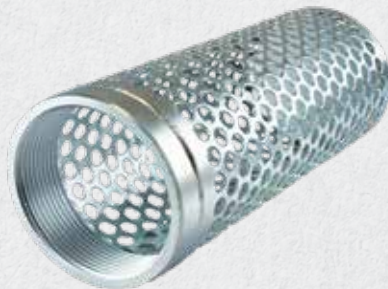
STRAINERS

SIZE	ROUND HOLE PART #	TUBE PART #	SQUARE HOLE PART #	TOP HOLE PART #	BOTTOM HOLE PART #
1 1/2"	RHS150	TRHS150	SHS150	THS150	BHS150
2"	RHS200	TRHS200	SHS200	THS200	BHS200
2 1/2"	RHS250	CALL	CALL	CALL	CALL
3"	RHS300	TRHS300	SHS300	THS300	BHS300
4"	RHS400	CALL	SHS400	CALL	CALL
6"	RHS600	CALL	SHS600	CALL	CALL
8"	RHS800	CALL	CALL	CALL	CALL

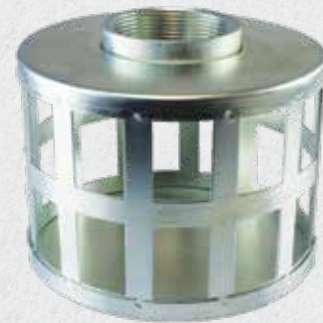
ROUND HOLE PART



TUBE PART



SQUARE HOLE PART



TOP HOLE PART



BOTTOM HOLE PART



FOOT VALVES

Foot valves are used on the submersed end of the water suction hose to prevent the pump from losing its prime when it's shut down. The foot valve stops the water from draining by a closing leather-flapper gate. Each valve has a built-in strainer that prevents debris from entering during operation. All sizes have NPS threads and complete valves are painted red.

SIZE	PART #
1 1/2"	FV150
2"	FV200
2 1/2"	FV250
3"	FV300
4"	FV400
6"	FV600
8"	FV800

FOOT VALVE



BRASS BALL VALVES

Standard full-port, quarter-turn, brass ball valves rated for 600psi WOG (up to 2") and 400psi WOG (2 1/2" thru 4"). Female NPT thread each side. Chromium-plated brass ball and Teflon® ball seat. Available with locking handles and in stainless steel.

SIZE	PART #
1/4"	BV025BF
3/8"	BV038BF
1/2"	BV050BF
3/4"	BV075BF
1"	BV100BF
1 1/4"	BV125BF
1 1/2"	BV150BF
2"	BV200BF
2 1/2"	BV250BF
3"	BV300BF
4"	BV400BF

COMPONENT	MATERIAL
Valve Body	Brass
Valve Cap	Brass
O-Ring	PTFE
Ball	Chrome Plated Brass
Stem Spacer/Gasket	PTFE
O-Ring	PTFE
Stem Spacer/Gasket	Brass
Nut	Brass
Cap	Brass
Handle	Carbon Steel

BRASS BALL VALVE



* RAGCO supports the autonomy of its locations to select the best products to service their markets. Subtle variations of these specifications may exist. Contact your RAGCO affiliate for confirmation.

THREADED FLANGES

Forged carbon steel, raised-face, threaded 150# ANSI flanges. Female threaded for easy installation on hose, pipe, or equipment with male threads. Available in blank, slip-on, and weldable version. Also available in stainless steel.

PART #	NOMINAL SIZE	OUTER DIAMETER	BOLT CIRCLE	HOLES	BOLT HOLE DIAMETER	THICKNESS
CSF-050	1/2"	3 1/2"	2 3/8"	4	5/8"	5/8"
CSF-075	3/4"	3 7/8"	2 3/4"	4	5/8"	5/8"
CSF-100	1"	4 1/4"	3 1/8"	4	5/8"	3/4"
CSF-125	1 1/4"	4 5/8"	3 1/2"	4	5/8"	7/8"
CSF-150	1 1/2"	5"	3 7/8"	4	5/8"	7/8"
CSF-200	2"	6"	4 3/4"	4	3/4"	1"
CSF-250	2 1/2"	7"	5 1/2"	4	3/4"	1 1/8"
CSF-300	3"	7 1/2"	6"	4	3/4"	1 1/4"
CSF-400	4"	9"	7 1/2"	8	3/4"	1 3/8"
CSF-500	5"	10"	8 1/2"	8	7/8"	1 3/8"
CSF-600	6"	11"	9 1/2"	8	7/8"	1 1/2"
CSF-800	8"	13 1/2"	11 3/4"	8	7/8"	1 3/4"
CSF-1000	10"	16"	14 1/4"	12	1"	2"
CSF-1200	12"	19"	17"	12	1"	2 1/8"

THREADED FLANGE

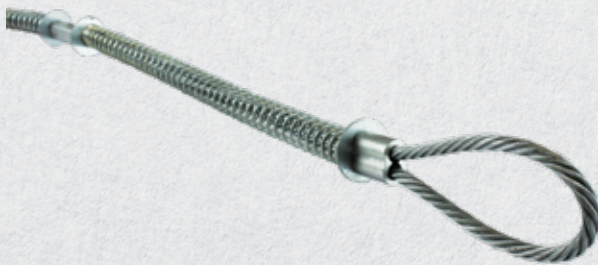


WHIP CHECKS

Whip Checks are attachable safety cables for the prevention of hose whip in case of the accidental separation of a coupling or clamp device.

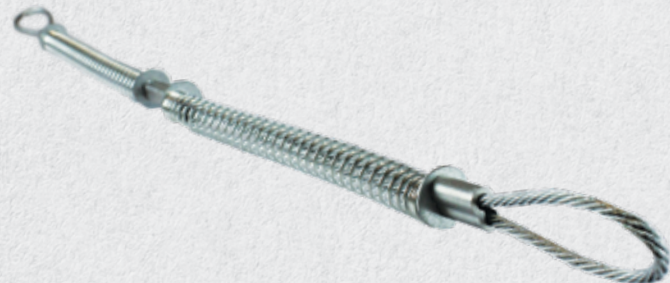
HOSE-TO-TOOL

CABLE DIMENSIONS	HOSE I.D.	PART #
1/8" X 20"	1/2" - 1 1/4"	HTWS1
1/4" X 38"	1 1/2" - 3"	HTWS2



HOSE-TO-HOSE

CABLE DIMENSIONS	HOSE I.D.	PART #
1/8" X 20"	1/2" - 1 1/4"	HHWC1
1/4" X 38"	1 1/2" - 3"	HHWC2



WRENCHES

HYDRANT WRENCHES

Part # HYD-1 is a standard and complete tool for fire hydrant operation. The pentagonal nut head is adjustable to fit hydrant valves to 1-3/4" for on/off operation. The head also operates pin-lug or rocker-lug connections from 1-1/2" to 6"

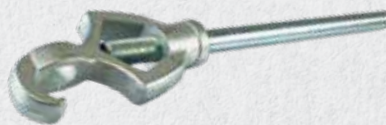
Part # HYD-3 is lighter in weight than the HYD-1 with the same adjustable features. Fits 1-3/4" pentagonal nuts. The head will operate hydrant cap and adapter-pin or rocker lugs. Handle is plated.

HYDRANT WRENCH TYPE	PART #
Standard	HYD-1
Lightweight	HYD-3

STANDARD HYDRANT



LIGHTWEIGHT HYDRANT



SPANNER WRENCHES

Made from ductile iron with easy-grip handle, contour head to fit the coupling curve and a special round hole to engage the pin-lug. Dual diameter available for 2" x 2 1/2" size. Universal spanner wrench is painted red complete with pry bar end and gas cock shut off/on feature. Other end used as pin-lug or rocker-lug wrenching.

SPANNER WRENCH SIZE	PART #
1 1/2"	SW150
2"	SW200
2" X 2 1/2" *	SW2025
2 1/2"	SW250
3"	SW300
4"	SW400
Universal	US-1

STANDARD SPANNER



DUAL DIAMETER SPANNER



UNIVERSAL SPANNER



* RAGCO supports the autonomy of its locations to select the best products to service their markets. Subtle variations of these specifications may exist. Contact your RAGCO affiliate for confirmation.

NOZZLES

FOG NOZZLES

Plastic nozzles are made of high-impact bright red plastic with corrosion-resistant metal parts. Brass nozzles are high-quality heavy brass. These nozzles allow for straight stream or fog spray pattern in industrial, utility or commercial use. All sizes, for use at 100 PSI, water only at 70°F.

BRASS FOG NOZZLE



PLASTIC FOG NOZZLE



BRASS FOG NOZZLE

THREAD SIZE	THREAD TYPE	PART #
1 1/2"	NPS	FN150B
1 1/2"	NST	FN150BNST
2"	NPS	FN200B
2 1/2"	NPS	FN250BNST
2 1/2"	NST	FN250BNST

PLASTIC FOG NOZZLE

THREAD SIZE	THREAD TYPE	PART #
1 1/2"	NPS	FN150
1 1/2"	NST	FN150NST

TWIST GARDEN-HOSE NOZZLE

Features all-brass valve stem, four nozzle openings for full flow, and replaceable front and rear O-ring seals for leakproof shut-off. Precise tip angle eliminates side spray. Adjustable from fine spray to needle stream to heavy rinse. Heavy-duty, solid brass construction. Roughly 4" length.

THREAD SIZE	THREAD TYPE	PART #
3/4"	GHT	TGHN



INSULATED PISTOL-GRIP GARDEN-HOSE NOZZLE

Insulated for use with hot or cold water. Inlet is female garden-hose thread. Tip is male garden-hose thread as an easy combination with other attachments.

THREAD SIZE	THREAD TYPE	PART #
3/4"	GHT	IPGN



NOZZLES CONTINUED

TAPERED (SUICIDE) NOZZLES

Made from cast brass with satin finish. Orifice tip sizes are standard. All sizes, for use at 100 psi, water only at 70°F.

TAPERED NOZZLE

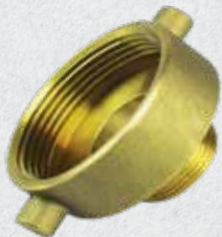


THREAD SIZE	THREAD TYPE	NOZZLE LENGTH	PART #
3/4"	GHT	6"	BN075GHT
3/4"	NPSH	6"	BN075
1"	NPSH	8"	BN100
1 1/4"	NPSH	9"	BN125
1 1/2"	NPSH	10"	BN150
1 1/2"	NST	10"	BN150NST
2"	NPSH	12"	BN200
2 1/2"	NPSH	CALL	BN250
2 1/2"	NST	CALL	BN250NST

BRASS PIN-LUG HYDRANT ADAPTERS

For industrial utility and fire department applications, these adapters allow easy connections from hydrant to smaller size hose. Made of heavy-duty cast brass with satin finish. Pin-lug style. All threads are V cut. Replacement gasket part # HAG250. Hex adapters and other configurations not shown are available. Please call for more information.

HYDRANT ADAPTER



FEMALE SIDE	MALE SIDE	PART #
1 1/2" NPT	1 1/2" NST	HAB1516
1 1/2" NST	1 1/2" NPT	HAB1615
2" NPT	1 1/2" NST	HAB2016
2 1/2" NST	3/4" GHT	HAB075
2 1/2" NST	3/4" NPSM	HAB076
2 1/2" NST	1" NPSM	HAB100
2 1/2" NST	1 1/2" NPSM	HAB150
2 1/2" NST	1 1/2" NPT	HAB150NPT
2 1/2" NST	1 1/2" NST	HAB150NST
2 1/2" NST	2" NPSM	HAB200
2 1/2" NST	2" NPT	HAB200NPT
2 1/2" NST	2 1/2" NPT	HAB250NPT

* RAGCO supports the autonomy of its locations to select the best products to service their markets. Subtle variations of these specifications may exist. Contact your RAGCO affiliate for confirmation.

HOSE CLAMPS

WORM-GEAR CLAMPS

Engineered with efficient three-piece construction for tough installation. No spot welds to corrode material, and edges are rounded to protect the hose. Easily installed with a screwdriver, nut driver, or socket wrench. Available in partial- or all-stainless construction or in "quick release" style.

CLAMP NUMBER	BAND WIDTH	DIAMETER MIN	DIAMETER MAX
#6	1/2"	3/8"	7/8"
#8	1/2"	7/16"	1"
#10	1/2"	9/16"	1-1/16"
#12	1/2"	9/16"	1-1/4"
#16	1/2"	11/16"	1-1/2"
#20	1/2"	3/4"	1-3/4"
#24	1/2"	1-1/16"	2"
#28	1/2"	1-5/16"	2-1/4"
#32	1/2"	1-9/16"	2-1/2"
#36	1/2"	1-13/16"	2-3/4"
#40	1/2"	2-1/16"	3"
#44	1/2"	2-5/16"	3-1/4"
#48	1/2"	2-9/16"	3-1/2"
#52	1/2"	2-13/16"	3-3/4"
#56	1/2"	3-1/16"	4"
#60	1/2"	3-5/16"	4-1/4"
#64	1/2"	3-9/16"	4-1/2"
#72	1/2"	4-1/16"	5"
#80	1/2"	4-5/8"	5-1/2"
#88	1/2"	4-3/32"	6"
#96	1/2"	4-1/2"	6-1/2"
#104	1/2"	5"	7"
#116	1/2"	5-3/4"	7-1/2"



LARGE DIAMETER WORM-GEAR CLAMPS

Similar design to worm-gear clamps for larger diameter applications. Usually open-ended for easy installation.

CLAMP NUMBER	BAND WIDTH	DIAMETER MIN	DIAMETER MAX
#128	1/2"	1-3/4"	8-9/16"
#152	1/2"	2"	10"
#188	1/2"	2-1/16"	12-5/16"
#216	1/2"	10-3/16"	14"
#248	1/2"	1-3/4"	16"
#312	1/2"	1-7/8"	20"



HOSE CLAMPS CONTINUED

T-BOLT CLAMPS

T-Bolt clamps are a step up from basic worm-gear clamps. The principle is the same with a 3/4" band providing 360 degrees of sealing surface, and they are particularly useful in high-torque applications. Note: The T-Bolt clamp's design allows a smaller size range than other styles of field clamp. Please choose size carefully.

CLAMP NUMBER	SIZE RANGE (INCHES)
TBCS-21	1.31 X 1.56
TBCS-25	1.56 X 1.81
TBCS-27	1.69 X 1.94
TBCS-29	1.81 X 2.06
TBCS-33	2.06 X 2.31
TBCS-35	2.19 X 2.50
TBCS-37	2.31 X 2.62
TBCS-38	2.38 X 2.69
TBCS-39	2.44 X 2.75
TBCS-41	2.56 X 2.87
TBCS-43	2.69 X 3.00
TBCS-45	2.81 X 3.12
TBCS-47	2.94 X 3.25
TBCS-49	3.06 X 3.37

CLAMP NUMBER	SIZE RANGE (INCHES)
TBCS-53	3.31 X 3.62
TBCS-57	3.56 X 3.87
TBCS-58	3.63 X 3.94
TBCS-61	3.81 X 4.12
TBCS-65	4.06 X 4.37
TBCS-69	4.31 X 4.62
TBCS-73	4.56 X 4.87
TBCS-77	4.81 X 5.12
TBCS-81	5.06 X 5.37
TBCS-85	5.31 X 5.62
TBCS-89	5.56 X 5.87
TBCS-93	5.81 X 6.12
TBCS-97	6.06 X 6.37

CLAMP NUMBER	SIZE RANGE (INCHES)
TBCS-93	5.81 X 6.12
TBCS-97	6.06 X 6.37
TBCS-101	6.31 X 6.62
TBCS-105	6.56 X 6.87
TBCS-109	6.81 X 7.12
TBCS-113	7.06 X 7.37
TBCS-117	7.31 X 7.62
TBCS-121	7.56 X 7.87
TBCS-125	7.81 X 8.12
TBCS-129	8.06 X 8.37
TBCS-139	8.69 X 9.19
TBCS-170	10.63 X 11.13
TBCS-202	12.63 X 13.13



PUNCH-LOK CLAMPS

Preformed and ready for application to be installed with a center-punch tool. Diameter displayed is the actual diameter of the clamp. Choose the correct clamp for your application by selecting the next diameter over the outside diameter of your hose.

CLAMP NUMBER SS	CLAMP NUMBER GALV.	BAND WIDTH	DIAMETER
P-311S	P-311	3/8"	1-3/8"
P-3S	P-3	5/8"	13/16"
P-5S	P-5	5/8"	1-1/4"
P-6S	P-6	5/8"	1-1/2"
P-7S	P-7	5/8"	1-3/4"
P-8S	P-8	5/8"	2"
P-10S	P-10	5/8"	2-1/2"
P-12S	P-12	5/8"	3"
P-16S	P-16	5/8"	4"
P-20S	P-20	5/8"	5"
P-24S	P-24	5/8"	6"
P-28S	P-28	5/8"	7"
P-32S	P-32	5/8"	8"

PUNCH-LOK CLAMP



OPEN-ENDED PUNCH-LOK CLAMP



* RAGCO supports the autonomy of its locations to select the best products to service their markets. Subtle variations of these specifications may exist. Contact your RAGCO affiliate for confirmation.

HOSE CLAMPS CONTINUED

J-LOK CLAMPS

For use with special air-actuated and mechanical machines. Not for use with center-punch tools.

CLAMP NUMBER	DIAMETER
PJ-201	13/16"
PJ-202	1-3/8"
PJ-206	1-3/4"
PJ-207	2"
PJ-208	2-1/4"
PJ-209	2-1/2"
PJ-210	2-3/4"
PJ-211	3"

CLAMP NUMBER	DIAMETER
PJ-212	3-1/2"
PJ-213	4"
PJ-214	4-1/2"
PJ-215	5"
PJ-216	6"
PJ-218	7"
PJ-219	8"



HEAVY DUTY DOUBLE-BOLT CLAMPS

Heavy duty clamps with two bolts 180° and saddles for demanding applications.

CLAMP NUMBER	DIAMETER MIN	DIAMETER MAX
400	3-7/16"	3-13/16"
463	4"	4-3/8"
525	4-1/2"	5-1/8"
550	4-11/16"	5-15/16"
600	5-1/2"	5-15/16"
675	6-1/8"	6-7/8"
769	6-7/8"	7-3/8"
818	7-3/8"	8"
875	8-1/4"	8-7/8"
988	8-15/16"	9-3/4"
1125	9-5/16"	11-3/8"
1275	11-3/16"	13"



HOSE CLAMPS CONTINUED

DOUBLE-BOLT CORRUGATED HOSE CLAMPS

Clamps (for corrugated hose) manufactured in either clockwise (right hand) or counter clockwise (left hand) design, the spiral double-bolt clamp fits between the convolutions on a corrugated hose. When fully tightened, the wire secures the full circumference of the outside hose wall—not the convolutions—for a safe, economical and efficient securing method. Consult hose manufacturer for correct convolution direction. Direction of clamp spiral and hose convolutions are the same. *Specify clockwise (CW) or counterclockwise (CCW).

CLAMP NUMBER	HOSE SIZE
SDB150	1 ½"
SDB200	2"
SDB250	2 ½"
SDB300	3"
SDB400	4"
SDB500	5"
SDB600	6"
SDB800	8"
SDB1000	10"
SDB1200	12"

